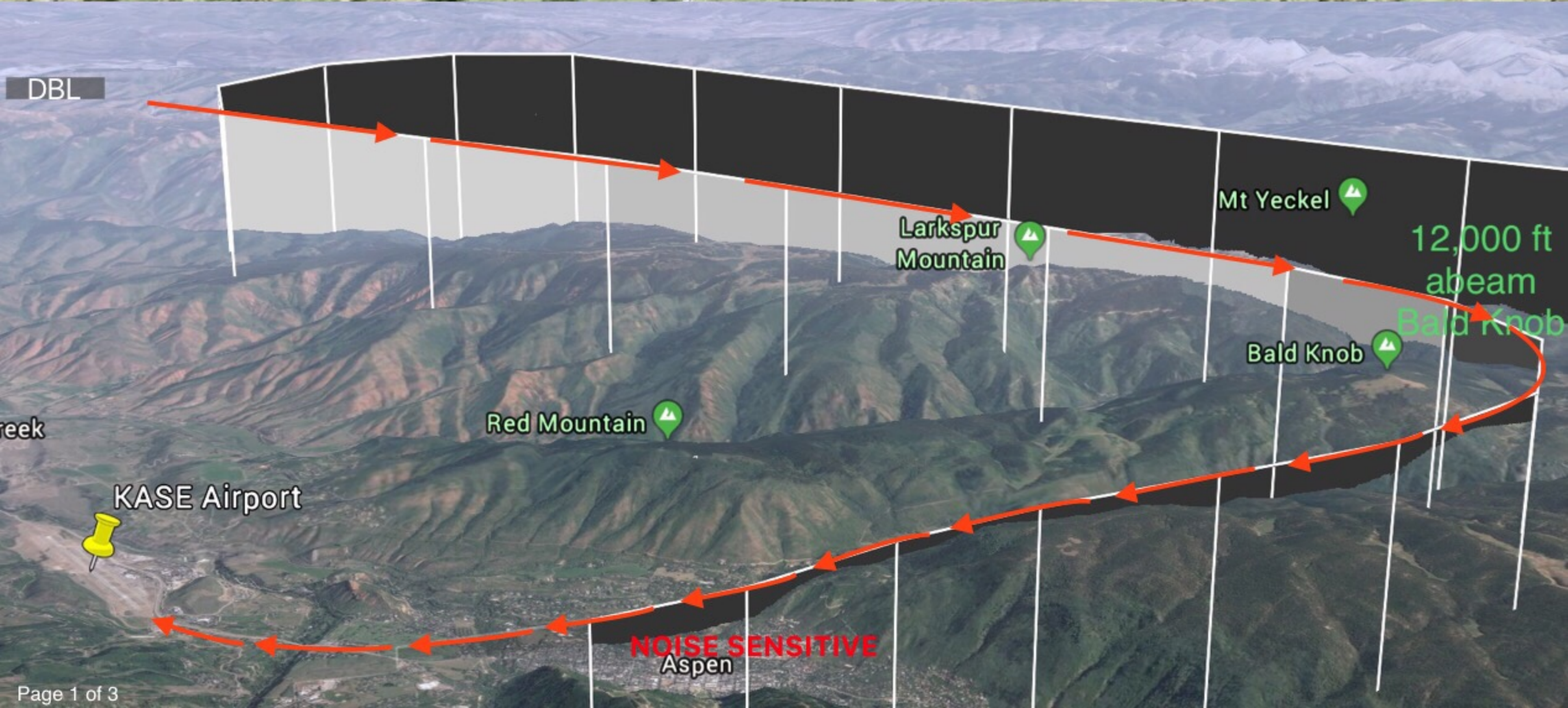
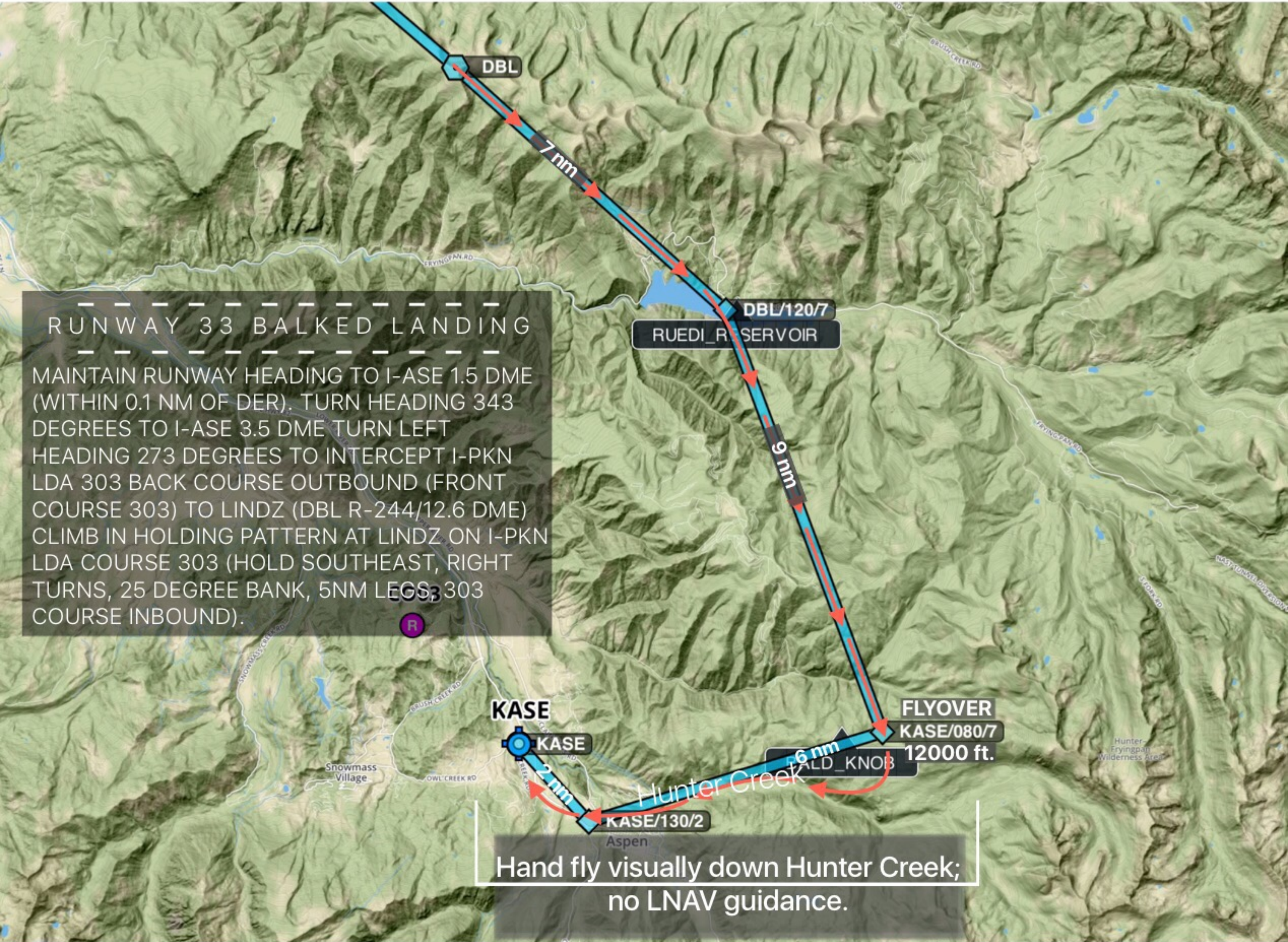


REFERENCE ONLY

Proceed southeast of DBL VOR over Ruedi Reservoir (DBL/120/7), then east of Bald Knob (KASE/080/7), and finally descend through Hunter Creek for a modified right base to final entry for Runway 33.



REFERENCE ONLY

Runway 33

Hunter Creek Arrival

Proceed southeast of DBL VOR over Ruedi Reservoir (DBL/120/7), then east of Bald Knob (KASE/080/7), descend through Hunter Creek for Runway 33.

